

Industrial Glands

CW Brass Gland with Integral Earth 419CE Series



Application

- > For steel wire armour cable

Features & Benefits

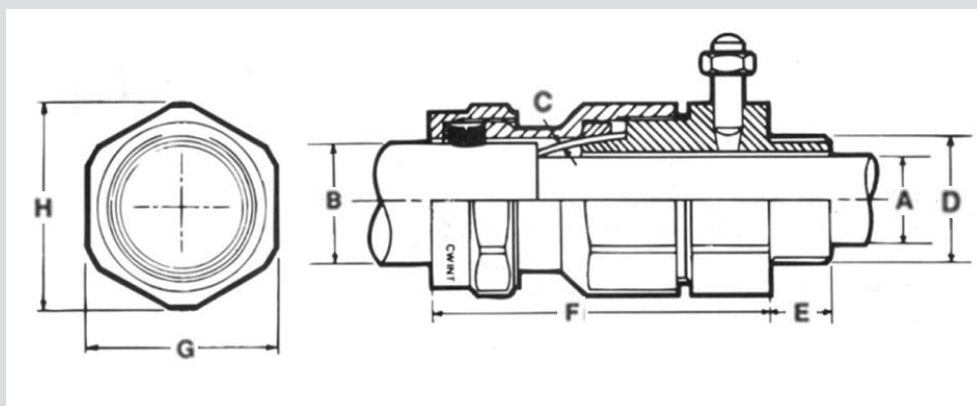
- > Brass indoor and outdoor cable gland with earth bonding connection
- > Suitable for circular galvanised steel single wire armoured, plastic or rubber sheathed cables
- > Outer seal grips sheath of cable
- > For use in most climatic conditions, weatherproof and waterproof
- > Three part armour lock with separate armour locking ring
- > Accessories available separately

Technical Data

- > EN50262
- > Gland rated to IP66 with use of suitable sealing washer or thread sealant at gland interface
- > Service temperature range -20°C to +90°C
- > Integral earth connection complies with GDCD 190 Category A (43.3kA for 1 second)



CW Brass Gland with Integral Earth 419CE Series



Gland Details

Cable dimensions accommodated mm					Gland Reference		Glands dimension mm					Accessories
Diameter		Overall B		Armour wire diameter C	Size	Design Number	Entry thread		Approx. length from shoulder F	Hexagon size		Brass backnut Design number
Under armour A		Min	Max				Size	Length		Across flats G	Across corners H	
Min	Max	Min	Max				D	E				
-	11.6	8.0	15.8	0.9/1.25	20S	419CE-52	M20 × 1.5	10	56	30.5	34.0	429AA-53
-	13.9	11.7	20.8	0.9/1.25	20	419CE-53	M20 × 1.5	10	56	30.5	34.0	429AA-53
-	19.9	17.0	27.2	1.25/1.6	25	419CE-55	M25 × 1.5	10	63	42.4	48.0	429AA-55
-	26.2	23.5	33.5	1.6/2.0	32	419CE-56	M32 × 1.5	10	73	56.4	61.5	429AA-56
-	32.1	29.0	39.9	1.6/2.0	40	419CE-57	M40 × 1.5	15	77	56.4	61.5	429AA-57
-	44.0	39.5	52.6	2.0/2.5	50	419CE-59	M50 × 1.5	15	84	70.1	77.2	429AA-59
-	55.9	51.3	65.3	2.5	63	419CE-61	M63 × 1.5	15	84	90.1	100.0	429AA-61
-	67.9	62.5	78.0	2.5	75	419CE-63	M75 × 1.5	15	94	106.2	117.0	429AA-63
-	74.0	68.0	88.0	3.15	85	419CE-64	M85 × 2	20	125	115.0	126.0	429AA-64