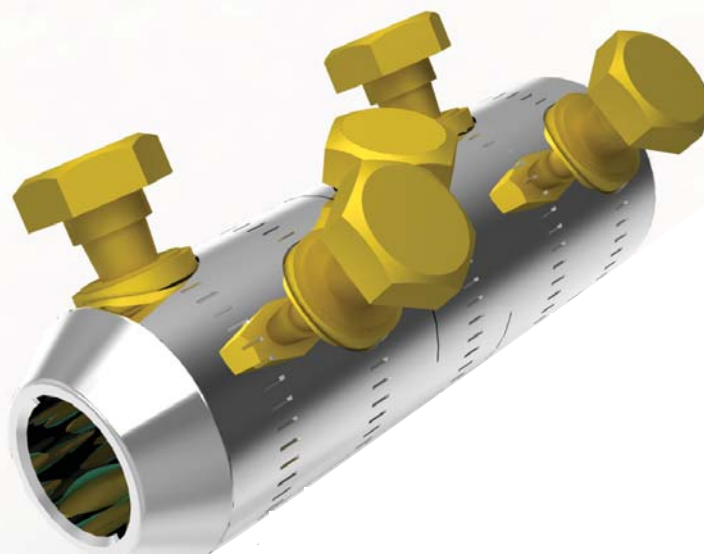


BMHC240ADSP1.5P

Solid Blocked Split Connector
185-300 mm² SAC



BI **con**™

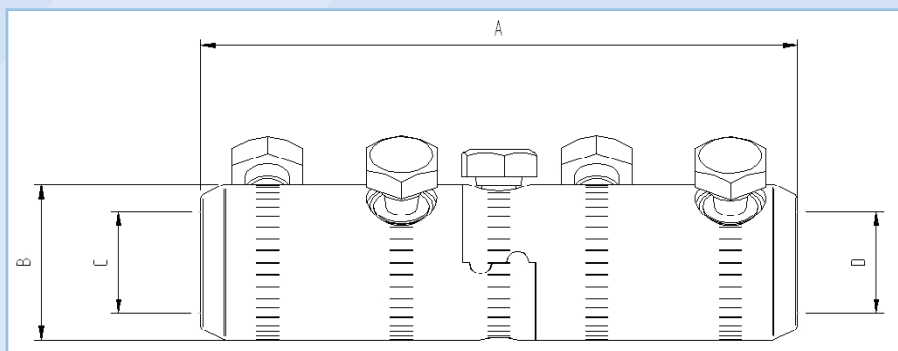
Application

Power cables with aluminium conductors.
Can be used with all jointing technologies:
cold shrink, heat shrink, resin etc.

Features

High tensile Jigsaw centre split design.
Profiled bores to enhance electrical contact and
increase mechanical constraint.
Full compliance with the **electrical** and **mechanical**
requirements of IEC 61238.

BMHC240ADSP1.5P Solid Blocked Split Connector 185-300 mm² SAC



Dimension Details

A	132 mm
B	38 mm
C	20 mm
D	20 mm

Technical Data

Connector Type	Mechanical Split
Material Reference Number	8705603
Catalogue Number	BMHC240ADSP1.5P
Connector Material	Aluminium
Number of Conductor Bolts	2+2
AF	19 mm
Shear torque	43-48 Nm
Bolt Material	Brass
Central Connection Type	Jigsaw
Central Connection Bolt	Yes, 1 off
AF	19 mm
Shear Torque	24 Nm
Bolt Material	Brass
Connection Bolt Removable	Yes, Allen Key
AF	6 mm
Conductor Cross Section Range	
Solid Aluminium	185-300 mm ²
Stranded Aluminium	150-240 mm ²
Stranded Copper	N/A mm ²
Stranded Flexible Copper	N/A mm ²
Overall Length	132 mm
Diameter	38 mm
Weight (each)	510g
Shipping Quantity (min)	20 pieces
Test Standard	IEC 61238

*Technical Information subject to change without notice.

Accessories

BMHOLDER	Connector brace for use on installation
59020	Mastic filler kit (Pack of 6 Strips)
8703802	Brass Centralising Range Extension Sleeve for 50mm ² (Str Al/Cu) to 70mm ² (SAC & Str Al/Cu)
8705602	Central Connection bolt (Pack of 3)
8702304	Brass Centralising Range Extension for 10mm ² (Str Al/Cu) to 35mm ² (Str Al/Cu)

Prysmian Cables & Systems Limited, Components Unit, Oak Road, Wrexham Industrial Estate, Wrexham, LL13 9PH
 Commercial Enquiries, Tel +44 (0) 845 767 8345, Fax +44 (0) 1978 662 410
 components.sales@prysmian.com

Ref: BMHC240ADSP1.5P/01/11

www.prysmian.co.uk

PRYSMIAN
CABLES & SYSTEMS