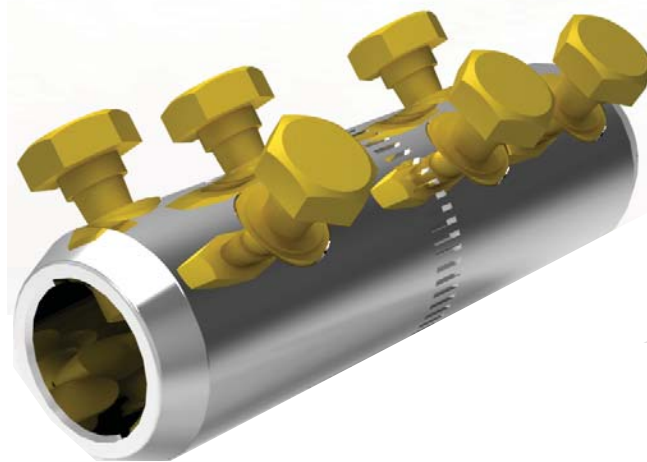


BMHC300150TADWB

Solid Blocked Straight Connector
150-(185-300) mm²



BIcon™

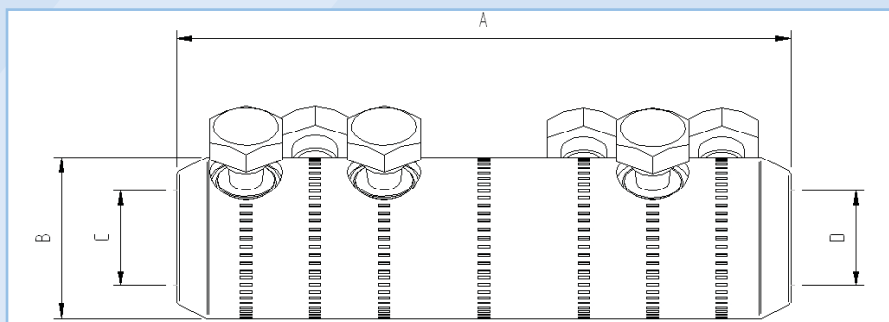
Application

Power cables with copper and aluminium conductors.
Can be used with all jointing technologies:
cold shrink, heat shrink, resin etc.

Features

Profiled bores to enhance electrical contact and increase mechanical constraint.
Full compliance with the **electrical** and **mechanical** requirements of IEC 61238.

BMHC300150TADWB Solid Blocked Straight Connector 150-(185-300)mm²



Dimension Details

A	140 mm
B	38 mm
C	24 mm
D	16 mm

Technical Data

Connector Type	Assymetric Solid Blocked Straight
Material Reference Number	8706301
Catalogue Number	BMHC300150TADWB
Connector Material	Tinned Aluminium
Number of Conductor Bolts	3+3
AF	19 mm
Shear torque	43-47 Nm
Bolt Material	Brass
Central Connection Type	None
Central Connection Bolt	N/A
AF	N/A mm
Shear Torque	N/A Nm
Bolt Material	N/A
Connection Bolt Removable	N/A
AF	N/A mm
Conductor Cross Section Range	
Solid Aluminium	N/A mm ²
Stranded Aluminium	150 to (185-300) mm ²
Stranded Copper	150 to (185-300) mm ²
Stranded Flexible Copper	N/A mm ²
Overall Length	140 mm
Diameter	38 mm
Weight (each)	565 g
Shipping Quantity (min)	20 pieces
Test Standard	IEC 61238

*Technical Information subject to change without notice.

Accessories

BMHOLDER	Connector brace for use on installation
59020	Mastic filler kit (Pack of 6 Strips)
8703901	Brass Centralising Range Extension Sleeve for 185mm ² SAC