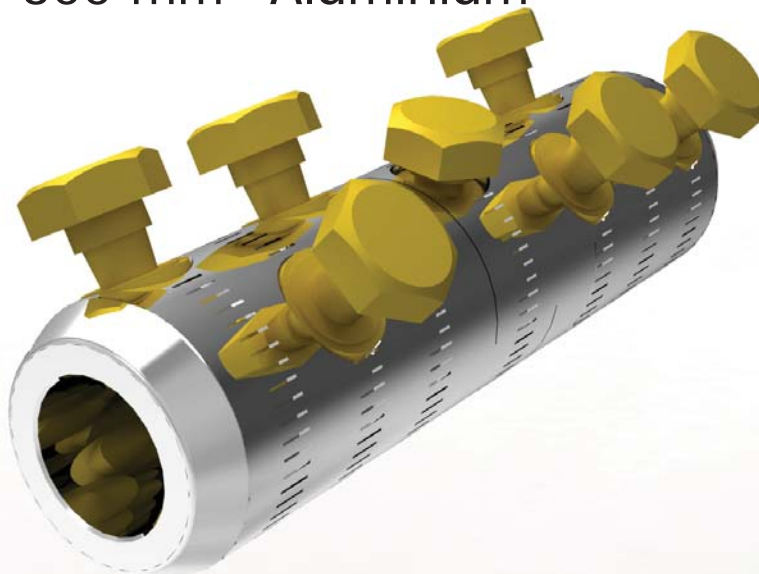


BMHC300ADSP

Solid Blocked Split Connector
185-300 mm² Aluminium



BI **CON**TM

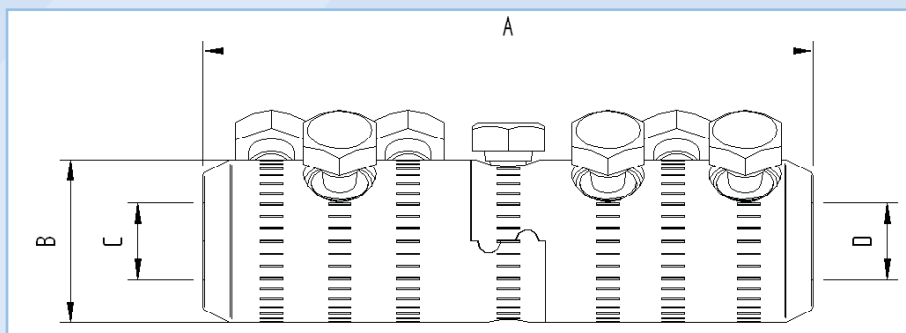
Application

Power cables with aluminium conductors.
Can be used with all jointing technologies:
cold shrink, heat shrink, resin etc.

Features

High tensile Jigsaw centre split design.
Profiled bores to enhance electrical contact and
increase mechanical constraint.
Full compliance with the **electrical** and **mechanical**
requirements of IEC 61238.

BMHC300ADSP Solid Blocked Split Connector 185-300 mm² Aluminium



Dimension Details

A	160 mm
B	42 mm
C	24 mm
D	24 mm

Technical Data

Connector Type	Mechanical Split
Material Reference Number	8702905
Catalogue Number	BMHC300ADSP
Connector Material	Aluminium
Number of Conductor Bolts	3+3
AF	19 mm
Shear torque	43-47 Nm
Bolt Material	Brass
Central Connection Type	Jigsaw
Central Connection Bolt	Yes, 1 off
AF	19 mm
Shear Torque	24 Nm
Bolt Material	Brass
Connection Bolt Removable	Yes, Allen Key
AF	6 mm
Conductor Cross Section Range	
Solid Aluminium	185-300 mm ²
Stranded Aluminium	185-300 mm ²
Stranded Copper	N/A mm ²
Stranded Flexible Copper	N/A mm ²
Overall Length	160 mm
Diameter	42 mm
Weight (each)	760 g
Shipping Quantity (min)	20 pieces
Test Standard	IEC 61238

*Technical Information subject to change without notice.

Accessories

BMHOLDER	Connector brace for use on installation
59020	Mastic filler kit (Pack of 6 Strips)
8702907	Central Connection Bolt (Pack of 3)
8703901	Brass Centralising Range Extension Sleeve for 185mm ² (SAC & Str Al/Cu)
8702902	Brass Centralising Range Extension Sleeve for 120-150mm ² (Str Cu) or 150mm ² (SAC & Str)
8702903	Brass Centralising Range Extension Sleeve for 70mm ² (SAC & Str Al/Cu) to 95mm ² (SAC & Str Al/Cu)
8702904	Brass Centralising Range Extension Sleeve for 10mm ² (Str Al/Cu) to 35mm ² (Str Al/Cu)
8705801	Brass Centralising Range Extension Sleeve for 0.15inch ² - 0.1inch ²

Prysmian Cables & Systems Limited, Components Unit, Oak Road, Wrexham Industrial Estate, Wrexham, LL13 9PH
 Commercial Enquiries, Tel +44 (0) 845 767 8345, Fax +44 (0) 1978 662 410
 components.sales@prysmian.com

Ref: BMHC300ADSP/01/11

www.prysmian.co.uk

PRYSMIAN
CABLES & SYSTEMS