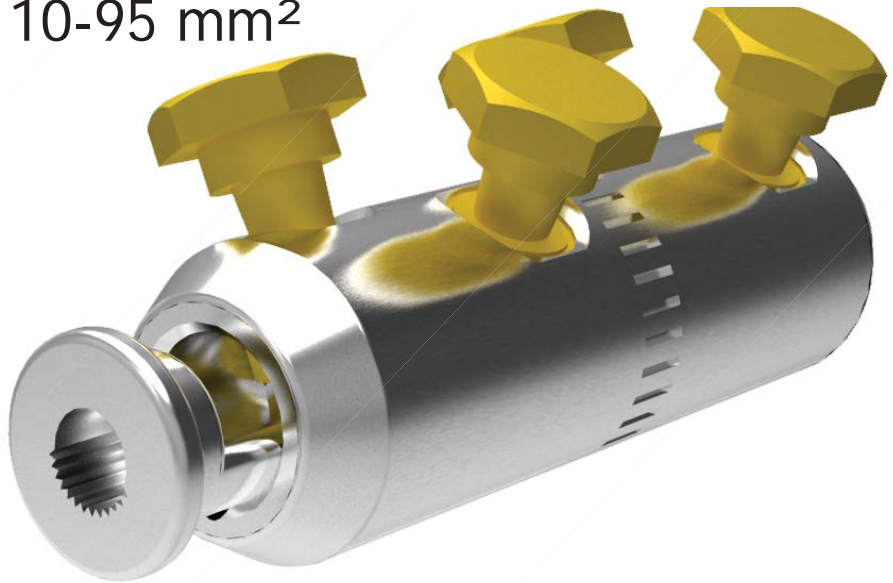


BMHC95TADWB

Solid Blocked Straight Connector
10-95 mm²



BI **CON**™

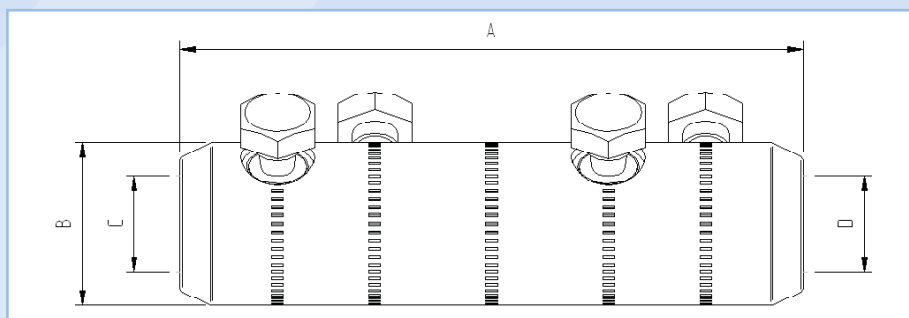
Application

Power cables with copper and aluminium conductors.
Can be used with all jointing technologies:
cold shrink, heat shrink, resin etc.

Features

Profiled bores to enhance electrical contact and increase mechanical constraint.
Full compliance with the **electrical** and **mechanical** requirements of IEC 61238.

BMHC95TADWB Solid Blocked Straight Connector 10-95 mm²



Dimension Details

A	85 mm
B	28 mm
C	15 mm
D	15 mm

Technical Data

Connector Type	Solid Blocked Straight
Material Reference Number	8706901
Catalogue Number	BMHC95TADWB
Connector Material	Tinned Aluminium
Number of Conductor Bolts	2+2
AF	17 mm
Shear torque	27-32 Nm
Bolt Material	Brass
Central Connection Type	None
Central Connection Bolt	N/A
AF	N/A mm
Shear Torque	N/A Nm
Bolt Material	N/A
Connection Bolt Removable	N/A
AF	N/A mm
Conductor Cross Section Range	
Solid Aluminium	10-95 mm ²
Stranded Aluminium	10-95 mm ²
Stranded Copper	10-95 mm ²
Stranded Flexible Copper	N/A mm ²
Overall Length	85 mm
Diameter	28 mm
Weight (each)	228g
Shipping Quantity (min)	20 pieces
Test Standard	IEC 61238

*Technical Information subject to change without notice.

Accessories

BMHOLDER	Connector brace for use on installation
59020	Mastic filler kit (Pack of 6 Strips)
8706902	Centralising Range Extension Sleeve for 10-35mm ²