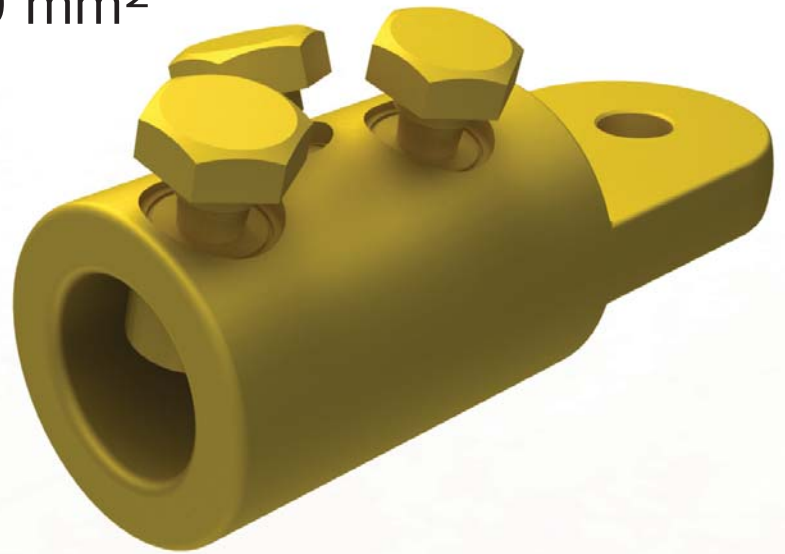


BMHT400BD1M12

Indoor/Outdoor Lug
300-400 mm²



BIcon™

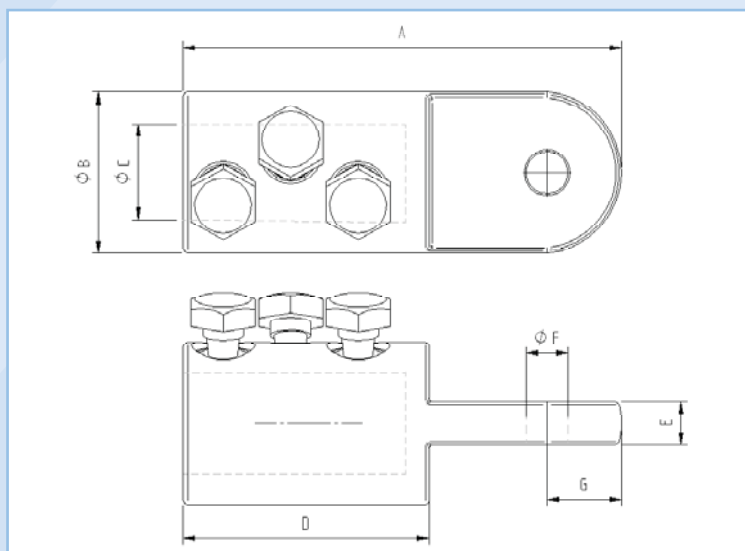
Application

Power cables with copper and aluminium conductors.
Can be used with cold shrink and heat shrink terminations. For 12mm stud fixings.

Features

Profiled bore to enhance electrical contact and increase mechanical restraint.
Full compliance with the **electrical** and **mechanical** requirements of IEC 61238.

BMHT400BD1M12 Indoor/Outdoor Lug 300-400 mm²



Dimension Details

A	130 mm
B	48 mm
C	28 mm
D	73 mm
E	13 mm
F	12.5 mm
G	22 mm

Technical Data

Connector Type	Lug (Centre Palm)
Material Reference Number	8706101
Catalogue Number	BMHT400BD1M12
Connector Material	Brass
Number of Conductor Bolts	3
AF	19 mm
Shear torque	47 Nm
Bolt Material	Brass
Palm Configuration	Single Hole
Hole size to suit stud diameter	12 mm
Additional sleeve to suit stud diameter	N/A mm
Slot	None
Slot Width	N/A mm
Slot Length	N/A mm
Conductor Cross Section Range	
Solid Aluminium	300-400 mm ²
Stranded Aluminium	300-400 mm ²
Stranded Copper	300-400 mm ²
Stranded Flexible Copper	N/A mm ²
Overall Length	130 mm
Diameter	48 mm
Weight (Each)	1155g
Shipping Quantity (min)	12 pieces
Test Standard	IEC 61238

*Technical Information subject to change without notice.

Accessories

BMHOLDER	Connector brace for use on installation
59020	Mastic filler kit (Pack of 6 Strips)