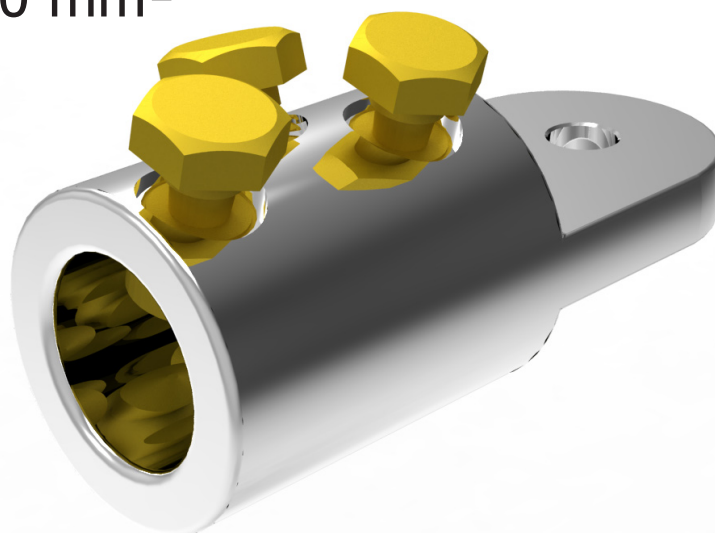


BMHT630TCD1M12

Indoor Lug
400-630 mm²



BIcon™

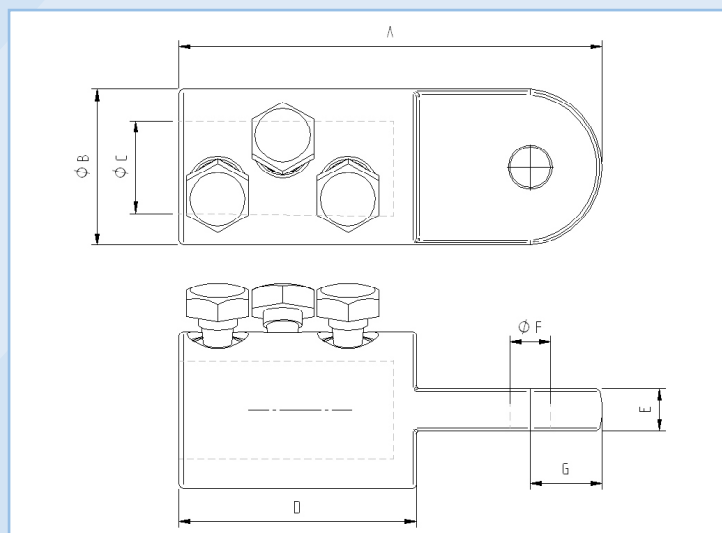
Application

Power cables with copper and aluminium conductors.
Can be used with cold shrink and heat shrink indoor terminations. For 12mm stud fixings.

Features

Profiled bore to enhance electrical contact and increase mechanical restraint.
Full compliance with the **electrical** and **mechanical** requirements of IEC 61238.

BMHT630TCD1M12 Indoor Lug 400-630 mm²



Dimension Details

A	130 mm
B	53 mm
C	33 mm
D	69 mm
E	13 mm
F	12.5 mm
G	24 mm

Technical Data

Connector Type	Lug (Centre Palm)
Material Reference Number	8706201
Catalogue Number	BMHT630TCD1M12
Connector Material	Tinned Copper
Number of Conductor Bolts	3
AF	19 mm
Shear torque	43-47 Nm
Bolt Material	Brass
Palm Configuration	Single Hole
Hole size to suit stud diameter	12 mm
Additional sleeve to suit stud diameter	N/A mm
Slot	None
Slot Width	N/A mm
Slot Length	N/A mm
Conductor Cross Section Range	
Solid Aluminium	N/A mm ²
Stranded Aluminium	400-630 mm ²
Stranded Copper	400-630 mm ²
Stranded Flexible Copper	N/A mm ²
Overall Length	130 mm
Diameter	53 mm
Weight (Each)	1260g
Shipping Quantity (min)	12 pieces
Test Standard	IEC 61238

*Technical Information subject to change without notice.

Accessories

BMHOLDER	Connector brace for use on installation
59020	Mastic filler kit (Pack of 6 Strips)