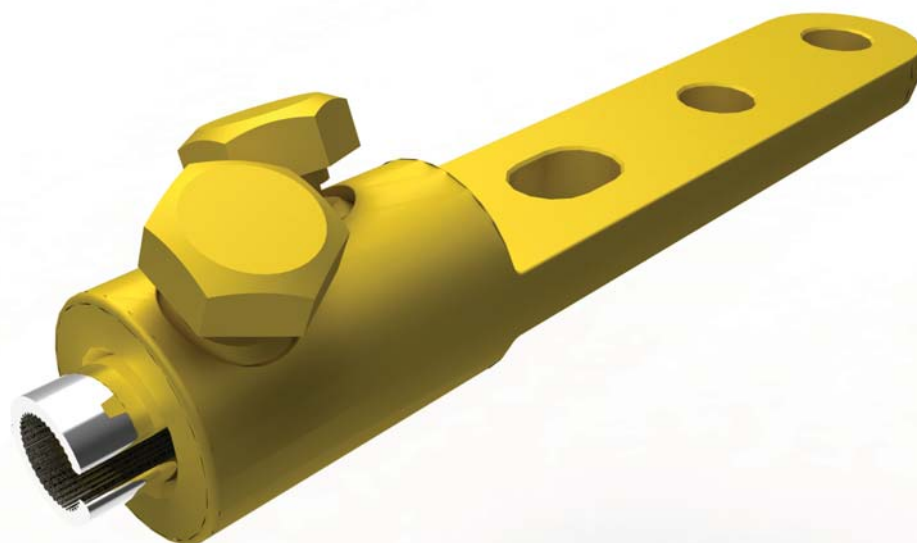


## BMHT0185AS3

Indoor/Outdoor Lug

95 -185 mm<sup>2</sup>



**BI** **CON**<sup>TM</sup>

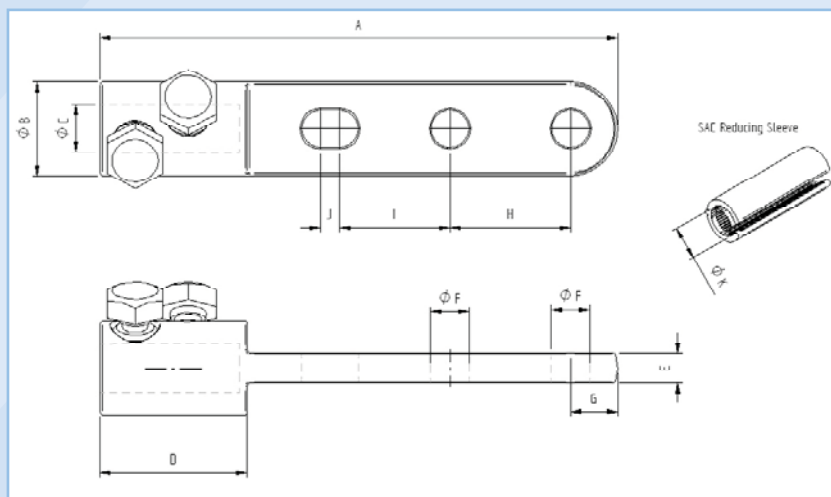
### Application

Power cables with copper and aluminium conductors.  
Can be used with cold shrink and heat shrink terminations. For 12mm stud fixings.

### Features

Profiled bore to enhance electrical contact and increase mechanical restraint.  
Full compliance with the **electrical** and **mechanical** requirements of IEC 61238.

# BMHTO185AS3 Indoor/Outdoor Lug 95-185 mm<sup>2</sup>



## Dimension Details

A	176 mm
B	32 mm
C	16.5 mm
D	50 mm
E	10 mm
F	13 mm
G	16 mm
H	41 mm
I	37.5 mm
J	6.5 mm
K	11 mm

## Technical Data

Connector Type	Lug (Centre Palm)
Material Reference Number	8702601
Catalogue Number	BMHTO185AS3
Connector Material	Brass
Number of Conductor Bolts	2
AF	19 mm
Shear torque	34 Nm
Bolt Material	Brass
Palm Configuration	2 Holes + Single Slot
Hole size to suit stud diameter	12 mm
Additional sleeve to suit stud diameter	N/A mm
Slot	1
Slot Width	13 mm
Slot Length	19.5 mm
Conductor Cross Section Range	
Solid Aluminium	95-185 mm <sup>2</sup>
Stranded Aluminium	70-150 mm <sup>2</sup>
Stranded Copper	70-150 mm <sup>2</sup>
Stranded Flexible Copper	N/A mm <sup>2</sup>
Overall Length	176 mm
Diameter	32 mm
Weight (Each)	600g
Shipping Quantity (min)	10 pieces
Test Standard	IEC 61238

\*Technical Information subject to change without notice.

## Accessories

BMHOLDER	Connector brace for use on installation
59020	Mastic filler kit (Pack of 6 Strips)