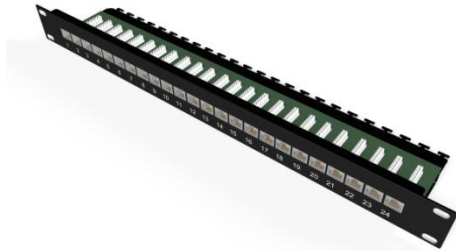


## UC<sup>CONNECT</sup>

### 1U 24port Cat5e UTP 90° Punch down Panel with Rear Management



#### Cat5e Unshielded 24-Port Punch Down Patch Panel

- Cat5e compliant performance
- 90° termination blocks for easy termination
- Compatible with 110 & Krone Punch Tools
- Built in cable management
- Available in Black and Grey
- Lasermark labels available on request

## Specification

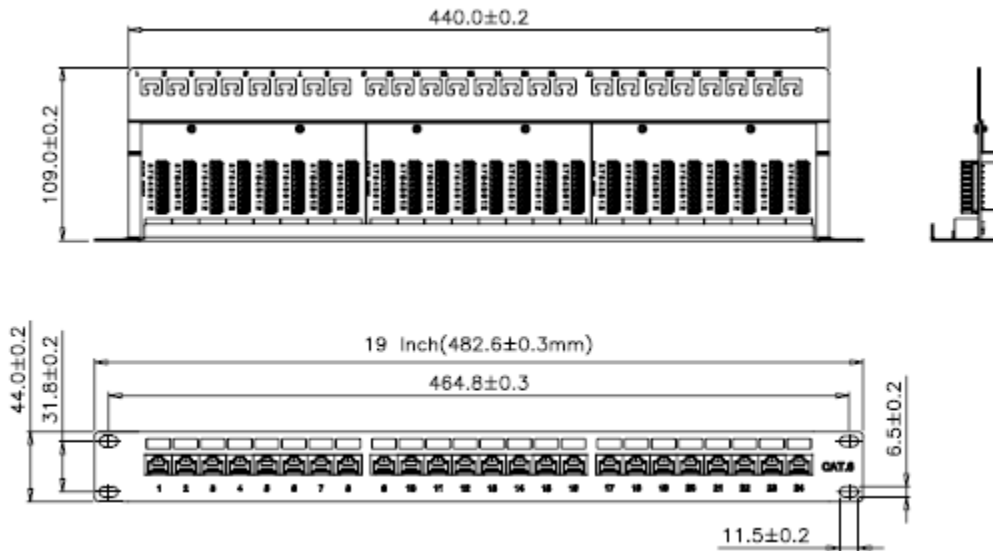


Item	Description
Panel	SPCC, 1.2 mm thickness
RJ45 jack contact material and finish	Phosphor Bronze  Contact area : Min 3 mm 50 micro-inch Gold plated over Nickel colour
IDC terminal and finish	Phosphor Bronze with min, 50 micro-inch Tin plated
Wire size compatibility	23-26 AWG solid wire
Dimensions (WxHxD) mm	482 x 44 x 109
<b>Performance</b>	
IDC cap colour code supports both wiring schemes TIA 568A & 568B	
Insertion force	20N max
Retention strength	7.7kg between jack and plug
Operating temperature	-10°C to 60°C
Durability	Jack 750 cycles

# UC<sup>CONNECT</sup>

## 1U 24port Cat5e UTP 90° Punch down Panel with Rear Management

### Construction



### Technical data

Material Code	Material Description	Description Code	Weight	Items per Packaging Unit
1021281 YPPBP00106	1U 24port Cat5e UTP 90° Punchdown Panel with Rear Management in Black	UC C300 PP TR U BK 24 1U	720g	1 or 20

© PRYSMIAN GROUP 2013, All Rights Reserved

All sizes and values without tolerances are reference values. Specifications are for product as supplied by Prysmian Group: any modification or alteration afterwards of product may give different result.

The information contained within this document must not be copied, reprinted or reproduced in any form, either wholly or in part, without the written consent of Prysmian Group. The information is believed to be correct at the time of issue. Prysmian Group reserves the right to amend this specification without prior notice. This specification is not contractually valid unless specifically authorised by Prysmian Group.