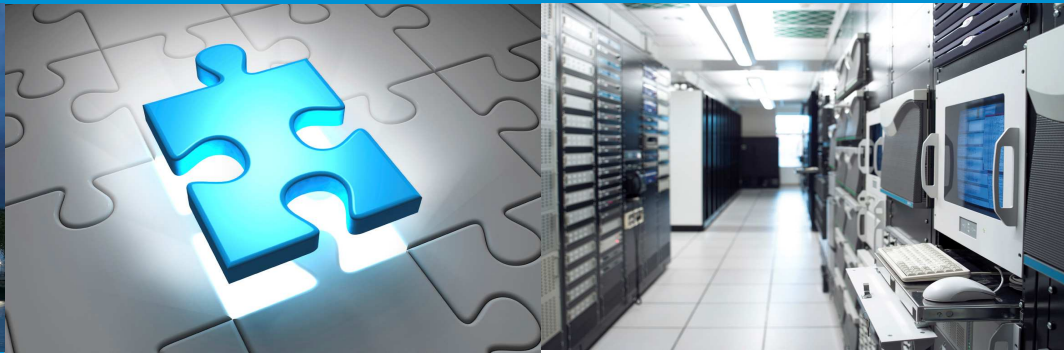




Datacom Connectivity



1U 48port Cat5e UTP 90°Punchdown Panel with Rear Mana gement Issue date: 10-10-20
Supersedes: 02/10



Value Innovation is a way of looking at the world. By combining market insight with technological know-how and building strong, long-lasting relationships, we add value to your business with advanced communication solutions and services that are designed to last. No matter how complex your challenge, we have a product or solution that will do more than meet your needs. New applications, breakthrough cables or complete network designs - it's all part of what we call Value Innovation, and it's what drives us.



Cat5e Unshielded 48-Port Patch Panel

- Cat5e compliant performance
- 90° termination blocks for easy termination
- Compatible with 110 & Krone Punch Tools
- Built in cable management
- Lasermark labels available on request

Specification	
Item	Description
Panel	SPCC, 1.5mm thickness
RJ45 jack contact material and finish	Phosphor Bronze Contact area : Min 3 mm 50 micro-inch Gold plated over Nickel colour
IDC terminal and finish	Phosphor Bronze with min, 50 micro-inch Tin plated
Wire size compatibility	22-26 AWG solid wire
Dimensions	482 x 44 x 143
Performance	
IDC cap colour code supports both wiring schemes TIA 568A & 568B	
Insertion force	20N max
Retention strength	7.7kg between jack and plug
Operating temperature	-10°C to 60°C
Durability	Jack 750 cycles



Draka

Draka UC^{Connect}300

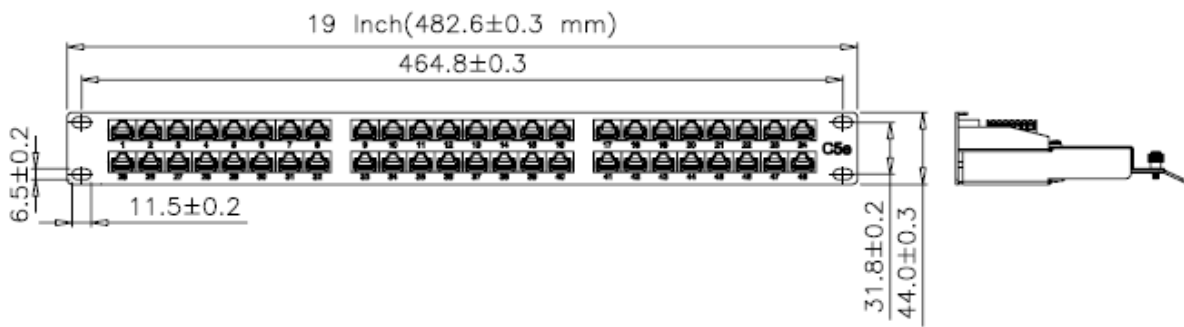
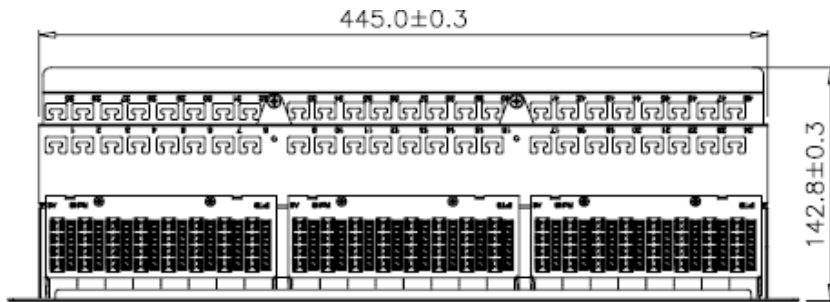
1U 48port Cat5e UTP 90° Punchdown Panel with Rear Management

Datacom Connectivity

1U 48port Cat5e UTP 90° Punchdown Panel with Rear Management

Issue date: 10-10-20

Supersedes: 02/10



Technical data

Material code	SAP Description	Designation	Size	Weight	Items per packaging unit
1021282	UC C300 PP TR U BK 48 1U	1U 48port Cat5e UTP Panel	482 x 44 x 143	975 g	1 or 20

Related Products

Material code	Designation