



Draka

Draka UC^{Connect} 400

2U 48port Cat6 UTP 180° Punch down Panel



Datacom Connectivity



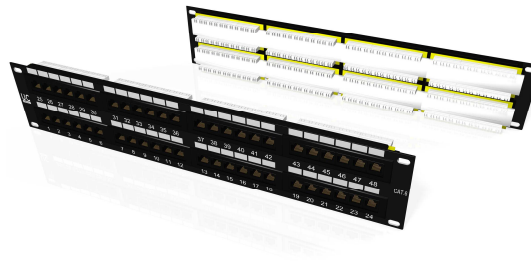
2U 48port Cat6 UTP 180° Punch down Panel

Issue date: 10-08-26

Supersedes: 02/10



Value Innovation is a way of looking at the world. By combining market insight with technological know-how and building strong, long-lasting relationships, we add value to your business with advanced communication solutions and services that are designed to last. No matter how complex your challenge, we have a product or solution that will do more than meet your needs. New applications, breakthrough cables or complete network designs - it's all part of what we call Value Innovation, and it's what drives us.



Cat6 Unshielded 48-Port Patch Panel

- Cat6 compliant performance
- 180° termination blocks for easy termination
- Compatible with 110 & Krone Punch Tools
- Lasermark labels available on request

Specification

| Item | Description |
|---------------------------------------|---|
| Panel | SPCC, 1.5mm thickness |
| RJ45 jack contact material and finish | Phosphor Bronze Contact area : Min 3 mm 50 micro-inch Gold plated over Nickel colour |
| IDC terminal and finish | Phosphor Bronze with min, 50 micro-inch Tin plated |
| Wire size compatibility | 22-26 AWG solid wire |
| Dimensions | 482 x 88 x 29 |

Performance

| | |
|--|-----------------------------|
| IDC cap colour code supports both wiring schemes TIA 568A & 568B | |
| Insertion force | 900 gm for 8 contacts |
| Retention strength | 7.7kg between jack and plug |
| Operating temperature | -10°C to 60°C |
| Durability | Jack 750 cycles |



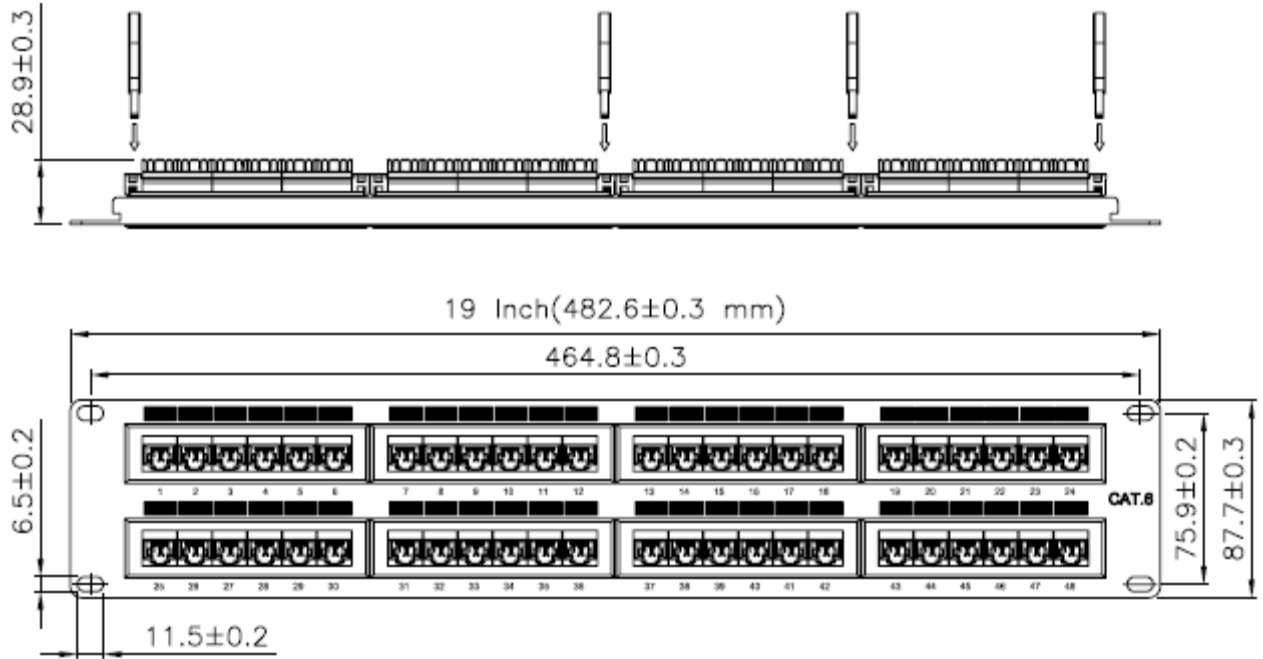
2U 48port Cat6 UTP 180° Punch down Panel

Datacom Connectivity

2U 48port Cat6 UTP 180° Punch down Panel

Issue date: 10-08-26

Supersedes: 02/10



Technical data

| Material code | Designation | Size | Weight | Items per packaging unit |
|---------------|--|---------------|--------|--------------------------|
| 1021294 | 2U 48port Cat6 UTP 180° Punch Down Panel | 482 x 88 x 29 | 985 g | 1 or 20 |

Related Products

| Material code | Designation | Weight | Items per packaging unit |
|---------------|----------------------------------|--------|--------------------------|
| 1021314 | Support Bar for 180° Patch Panel | 267 g | 1 or 20 |